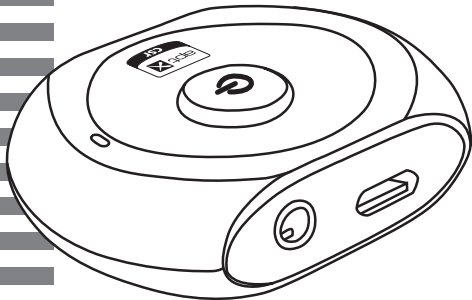


Bluetooth® Transmitter/receiver



BT10^{ER}

USER GUIDE

10015 - March 2013 - Version 1

1 - Package contents

The BT10-ER transmitter/receiver

A USB power cord to charge the battery

A Male mini Jack 3.5 mm / Male mini Jack 3.5mm audio cable

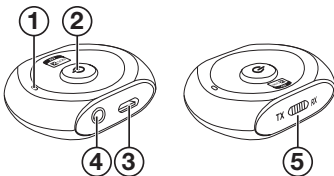
A Female mini Jack 3.5 / RCA audio cable

A Male mini Jack 3.5 / Male mini Jack 3.5 audio connector

The user guide

2 - Description

- 1 - Indicator LED
- 2 - Multifunctional button: ON / OFF / Peering
- 3 - Micro USB socket to charge the battery
- 4 - Jack 3.5 audio socket
- 5 - Mode selector : TX (transmitter) / RX (receiver)



3 - Charging the battery

First time

It is crucial to fully charge your BT-10ER before using it for the first time.

To do so, please connect the USB power cord to the rear micro USB power socket.

Your BT10-ER can be charged via the USB port of your computer or any standard charger featuring a USB port.

Our recommendation

After long periods of non-use (several weeks), your BT10-ER indicator LED might not light up. In such instances, please fully charge the battery as you would do if it were the first time. We recommend to charge the battery at least once every two months.

4 - Transmitter mode**4.1 - Activation and deactivation**

Position the selector (5) onto TX before activating your BT10-ER. You cannot switch from one mode to another if the BT10-ER is activated.

Activation:

Press and hold the multifunctional button for 5 seconds until the LED lights blue.

Note: If you removed the BT10-ER from the Bluetooth® devices list of your device (smartphone, tablet, etc.) it will automatically enter Pairing mode. The LED will then flash blue.

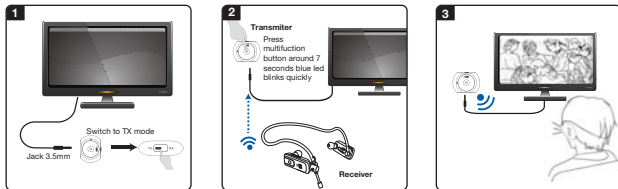
Deactivation:

Press and hold the multifunctional button for 3 seconds until the LED lights red during 1 second.

4.2 - Pairing a Bluetooth® device

- A - Connect one end of the audio cable or audio connector to the Jack socket of your BT10-ER, while connecting the other end to your device (smartphone, etc.).
- B - Switch to TX mode and position your BT10-ER within 1 meter of your Bluetooth® receiver (activate your receiver and its Bluetooth® mode).
- C - Press and hold the multifunctional button for 5 to 7 seconds until the indicator LED flashes blue.
- D - Your BT10-ER will automatically search for your device and the pairing process will start.
- E - Once the connection has been established, the LED will flash blue twice for 4 seconds.

The transmission mode



4.3 - Further details

- A - If the BT10-ER is paired with a aptX compatible device, the indicator LED will flash three times in 4 seconds. The aptX codec guarantees a very low latency and much higher sound quality than other standards Bluetooth® codecs.
- B - If pairing is not completed within two minutes, the BT10-ER enters standby mode.
- C - The BT10-ER supports devices whose PIN is **0000, 1111, 8888 or 1234**.

4.4 - LED reactions in transmission mode

Indication	BT10-ER Status
Constantly flashes blue	2-minute pairing process
Flashes blue every second	Stand-by mode, not connected
Flashes blue twice every 4 seconds	Connected
Flashes red	Battery almost fully discharged

5 - Receiver mode

5.1 - Activation and deactivation

Turn the selector (5) on the RX position before turning on the ER-BT10. The mode change can only be made if the BT10-ER is on.

Activation:

Press the multifunctional button for 7 seconds approximately, until the LED lights blue during 1 second.

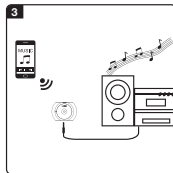
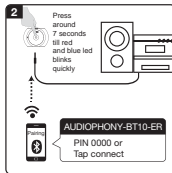
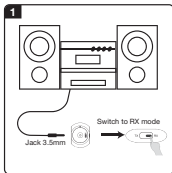
Deactivation:

Press the multifunctional button for 4 seconds until the LED lights red during 1 second.

5.2 - Pairing a Bluetooth® device

- A - Connect one end of the audio cable to the Jack socket of your BT10-ER, while connecting the other end to your sound system (e.g. amplified speakers).
- B - Enter RX mode, and position your BT10-ER within one meter of your Bluetooth® device.
- C - Press the multifunctional button for 6 to 8 seconds until the LED alternates blue and red flashes.
- D - Activate the Bluetooth® function of your device, search for AUDIOPHONY-BT10-ER in the Bluetooth® devices list.
- E - The LED will flash blue twice in 4 seconds to indicate the pairing is successful.

The reception mode



5.3 - Further details

- A - Your BT10-ER will enter sleep mode if the pairing has not been completed within 2 minutes.
- B - The PIN code of your device must be **0000**, **1111**, **8888** or **1234** to connect with your BT10-ER.
- C - In the event of failure during the pairing process, please repeat the steps aforementioned.
- D - Your BT10-ER can memorise up to 8 paired devices and will delete the oldest paired device once this number has been reached.
- E - Your BT10-ER will search for the last connected device upon activation. If you wish to connect another device, deactivate the Bluetooth® function of the first device before all.

4.4 - LED reactions in reception mode

Indication	BT10-ER Status
Alternates blue and red flashes	2-minute pairing process
Flashes blue every second	Stand-by mode, not connected
Flashes blue twice every 4 seconds	Connected
Flashes red	Battery almost fully discharged

6 - Advanced features

6.1 - Playing music

The reception mode allow you to control the play/pause functions:

Function	Action
Plays a track	Short press the multifunctional button
Pauses a track	Short press the multifunctional button

6.2 - Charging the battery while playing tracks

Your BT10-ER is fully operational while the battery is charging.

6.3 - Reconnecting to a Bluetooth® device

- A - Auto connection:** Your BT10-ER will automatically try to connect to the last device used upon activation.
- B - Manual connection:** Short press the multifunctional button to exit stand by mode and try to automatically reconnect to the last device used.
- C - Auto deactivation:** Your BT10-ER disconnects automatically after 5 minutes of inactivity.
- D - Clearing the list of devices:** Please make sure your BT10-ER is deactivated, and press the multifunctional button for 12 seconds until the LED lights red for 1 second then blue for 1 second.

7 - Technical specifications

- Compatible Bluetooth® profiles: apt-X, A2DP and AVRCP
- Apt-x® csr™ decoder allowing HD sound quality and low latency
- Operating range: approximately 10 meters - Class 2
- Battery life when emitting: Up to 10 hours approximately
- Battery life when receiving: Up to 9 hours approximately
- Battery life in standby mode: Up to 400 hours approximately
- Battery: 270mAh Lithium polymères rechargeable battery
- Weight: 48.5 g
- Dimensions: 50 x 37 x 13 mm

7 - Precautions and recommendations

- Do not use your BT10-ER in extreme environments as its temperature range is 0°C to 35°C.
- Please protect your BT10-ER against all liquids and humidity.
- Do not drop your BT10-ER as it may cause severe damages and/or destruction of its internal structures.
- Do not open your BT10-ER as its internal parts can only be repaired by a qualified technician.
- Please make sure the volume is at its lowest before deactivating your sound system in order to prevent hearing damages.
- Please make sure your charger does not exceed 5V DC before connecting it to the power input socket of your BT10-ER.
- Audiophony® cannot be held responsible for the loss or alteration of your files.



**This product contains a Lithium-ion battery
Do not puncture the battery, do not store or use it in
excessively wet, hot or cold environments.
Fire hazard**





Recycling your device

- As HITMUSIC is really involved in the environmental cause, we only commercialise clean, ROHS compliant products.
- When this product reaches its end of life, take it to a collection point designated by local authorities. The separate collection and recycling of your product at the time of disposal will help conserve natural resources and ensure that it is recycled in a manner that protects human health and the environment.



Sound levels

Our audio solutions deliver important sound pressure levels (SPL) that can be harmful to human health when exposed during long periods. Please do not stay in close proximity of operating speakers.

This product complies with the following European directives: **99/5/EC - 2004/108/EC** and following norms:

LVD : EN60950-1:2006+A11:2009+A1:2010+A12:2011

EMC : EN301489-17:V2.1.1:2009 + EN301489-1:V1.8.1:2008

RADIO : EN300328:V1.7.1:2006

EMF : EN62479:2010



AUDIOPHONY-HIT MUSIC S.A. - Parc d'Activités du Sycala - 46091 CAHORS
CEDEX 09 - FRANCE
www.audiophony.com

Because AUDIOPHONY® takes the utmost care in its products to make sure you only get the best possible quality, our products are subjects to modifications without prior notice. That is why technical specifications and the products physical configuration might differ from the illustrations.

Make sure you get the latest news and updates about the AUDIOPHONY® products on www.audiophony.com

AUDIOPHONY® is a trademark of HITMUSIC S.A. - Zone Cahors sud - 46230 FONTANES - FRANCE